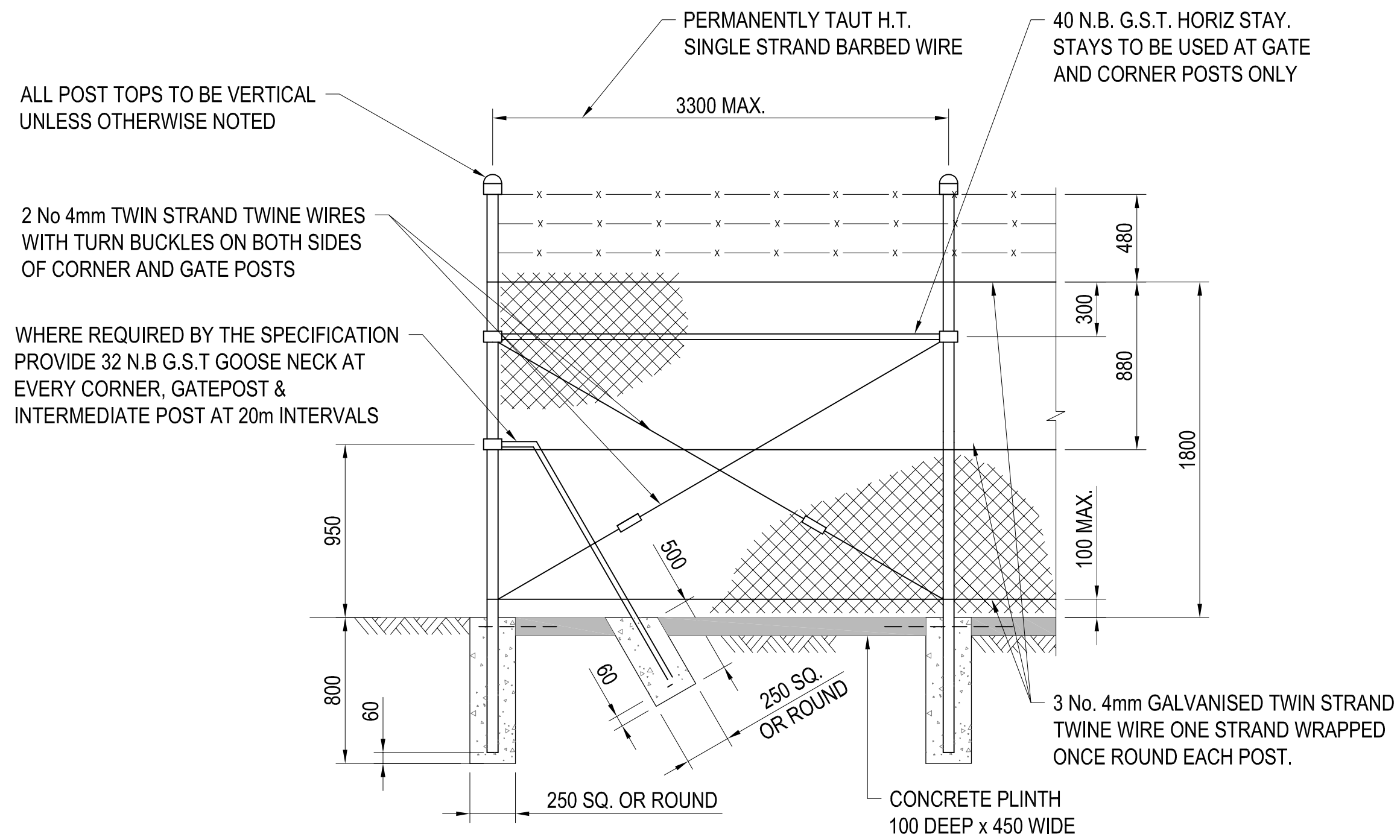
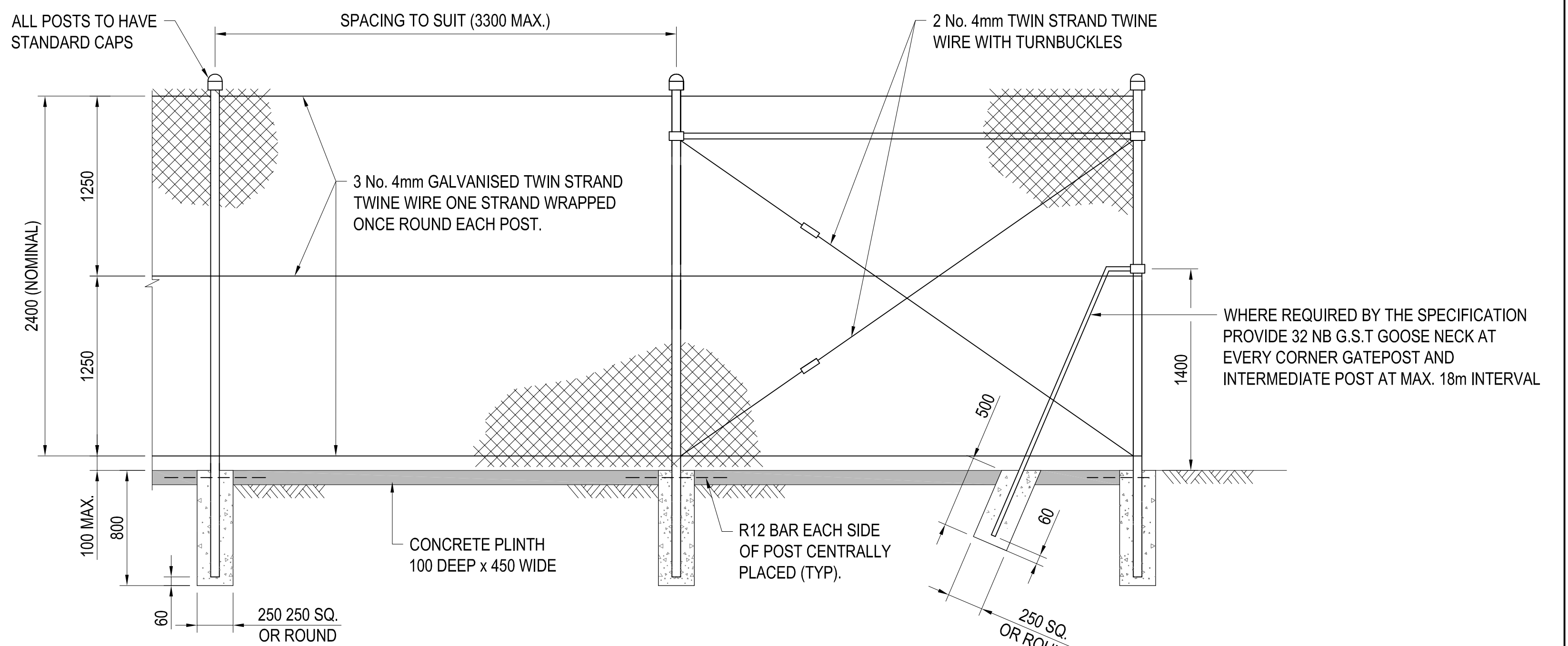


DO NOT SCALE



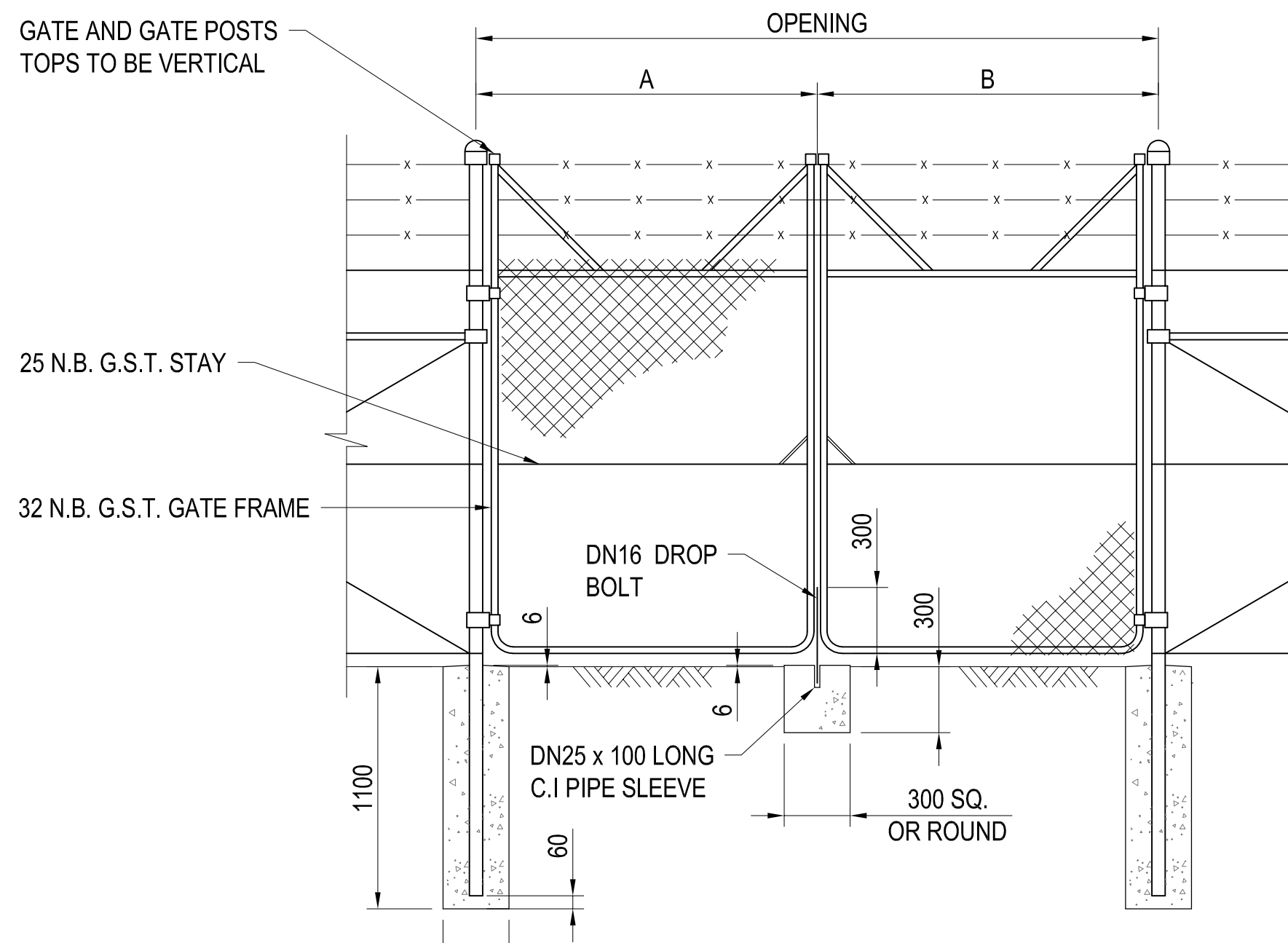
**CORNER POST AND STANDARD PANEL
CHAIN WIRE SECURITY FENCE DETAIL**

SCALE 1:25



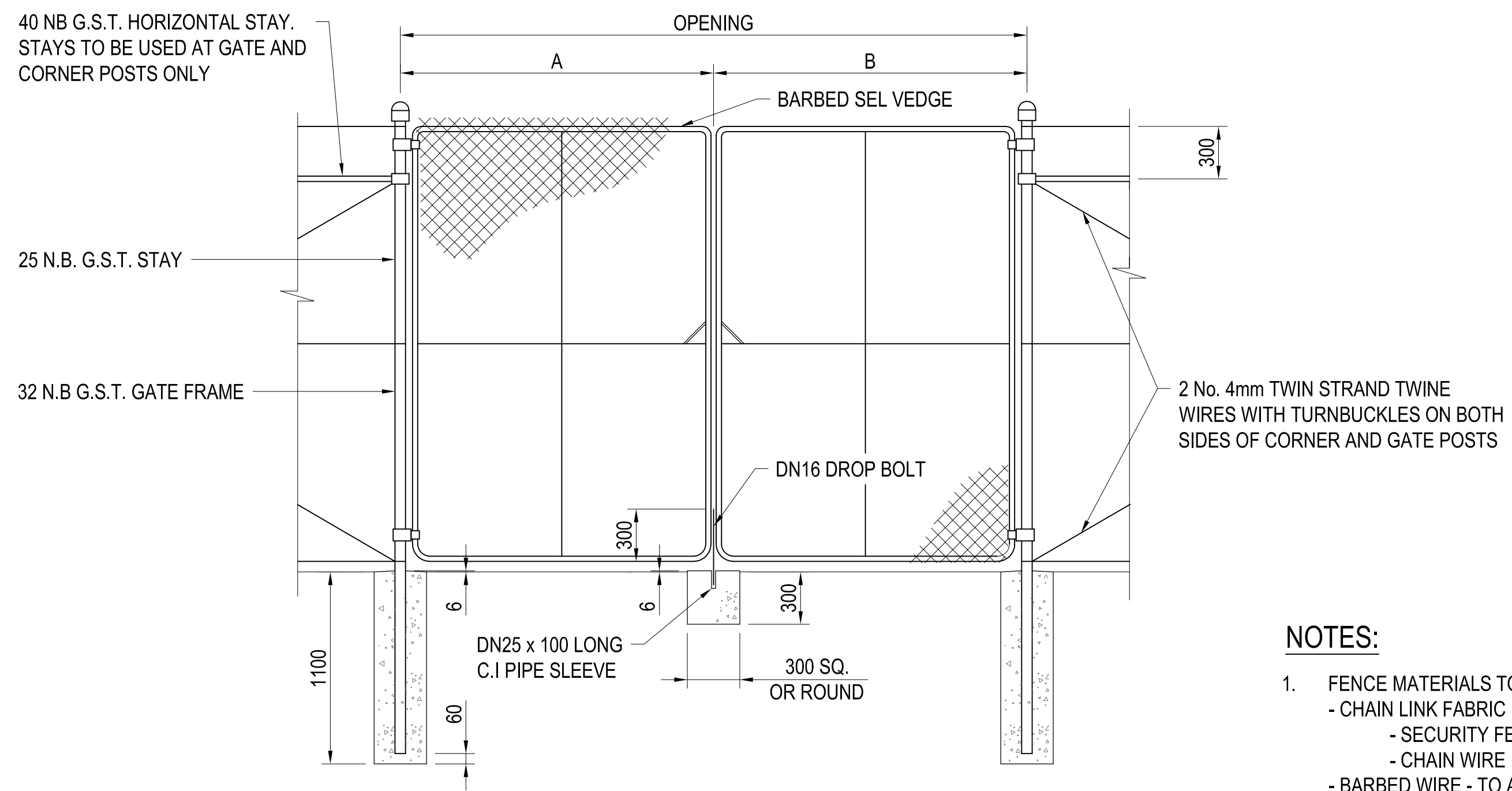
**CORNER POST AND STANDARD PANEL
CHAIN WIRE FENCE DETAIL**

SCALE 1:25



**ENTRANCE GATES AND ADJACENT FENCE
CHAIN WIRE SECURITY FENCE DETAIL**

SCALE 1:25



**ENTRANCE GATES AND ADJACENT FENCE
CHAIN WIRE FENCE DETAIL**

NOTES:

- FENCE MATERIALS TO AS 1725
 - CHAIN LINK FABRIC
 - SECURITY FENCE - 1800 x 50 x 3.15/W10Z/HG/KB HEAVY DUTY.
 - CHAIN WIRE FENCE - 2400 x 50 x 3.15/W10Z/HG/KB HEAVY DUTY.
 - BARBED WIRE - TO AS2423
 - GATE AND CORNER POSTS - DN80 MEDIUM QUALITY.
 - INTERMEDIATE POSTS - DN50 MEDIUM QUALITY.
 - GATE FRAMES - TO TABLE E1 OF AS1725.
 - HORIZONTAL STAYS - DN40 MEDIUM QUALITY
- FENCE CONSTRUCTION TO AS 1725
- GROUND LINE UNDER FENCE TO BE GRADED TO AN EVEN FINISH.
- SECURITY FENCING TO BE PVC COATED AND PAINTED WHERE SPECIFIED.

STANDARD DRAWING



**BARWON WATER - STANDARD DRAWING
CHAIN WIRE RAIL-LESS SECURITY FENCE**

DRAWN R.MARRIOTT 12.03.10	DESIGNED A.MICALLEF 12.03.10	APPROVED P.THOMAS* 11.09.14	SCALES: PLAN SECTION HORIZ. VERT. Scale for A1 sheet
DRG No. BW-SD-G010	DRAWING DISCIPLINE: GENERAL SHEET NO. 1 of 1	DRAFTING CHECK G.BERRYMAN* 20.05.14	