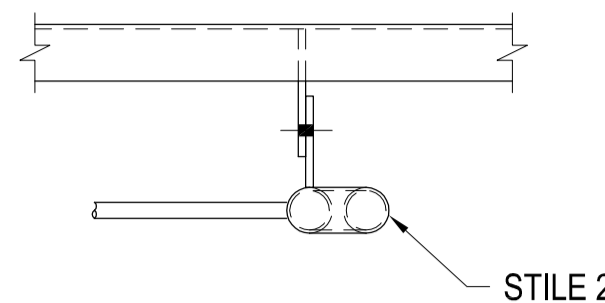
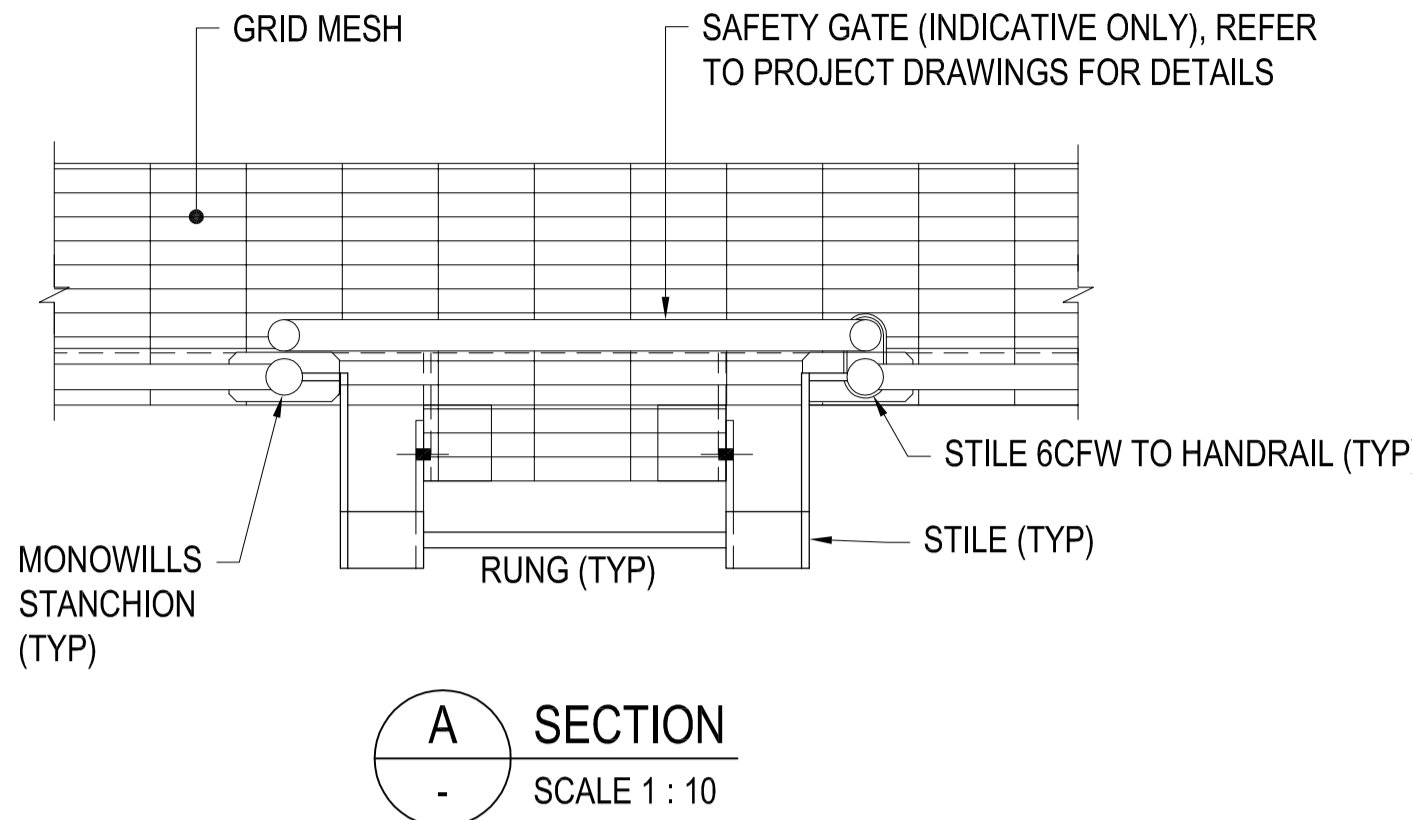
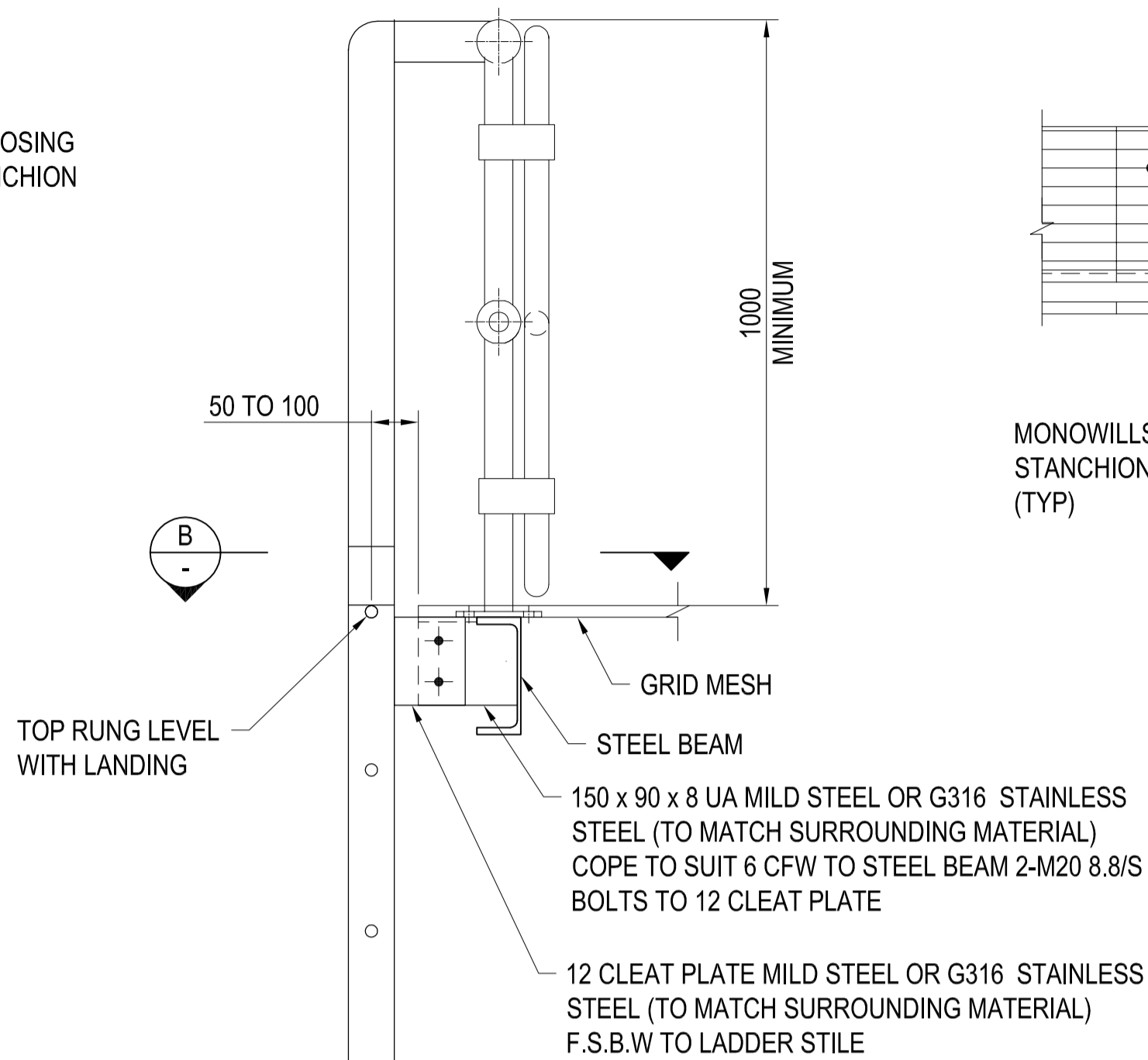
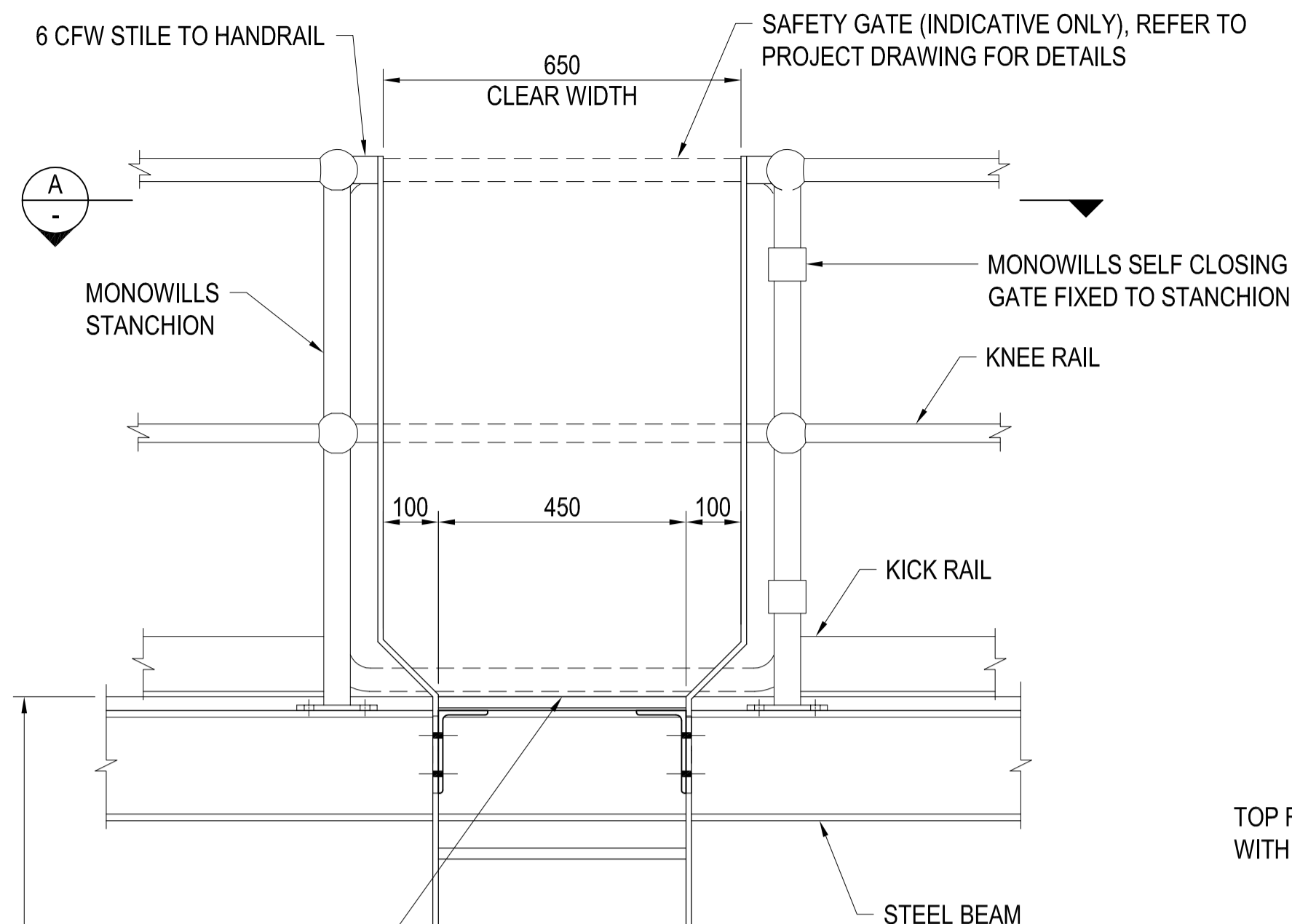


DO NOT SCALE



ALTERNATIVE STILE 2 - STILE TO BEAM DETAIL

SECTION B SCALE 1:10

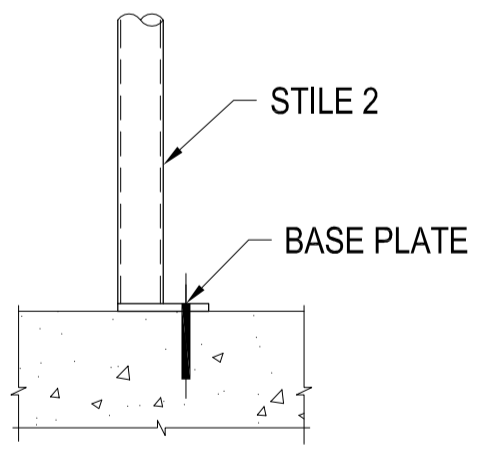
SECTION A SCALE 1:10

RUNGS SPACED EQUALLY (300 MAX. - 250 MIN.) REFER DESIGN DRAWINGS FOR OVERALL DIMENSION (6m MAX. HEIGHT)

NOTE:
VERTICAL LADDERS AND LADDERS WITH SLOPE IN EXCESS OF 75° ARE NOT WITHIN AS 1657. FALL ARREST SAFETY SYSTEMS THAT ARE APPROVED BY BARWON WATER MUST BE USED BY ALL PERSONNEL ACCESSING THE LADDER.

NOTES:

1. ALL WELDS 6mm CFW, UNLESS NOTED OTHERWISE.
2. ALL ANCHORS 100mm MIN. EMBEDMENT, 65mm MIN. EDGE DISTANCE.
3. RUNG LADDER TO COMPLY WITH AS 1657 DURING SHOP DRAWING REVIEW.
4. FIXING POINTS FOR EACH SPECIFIC SITE TO BE INSPECTED BY A STRUCTURAL ENGINEER.
5. MILD STEEL TO BE HOT DIP GALVANISED (HDG).
6. FIT LOCKED PROTECTIVE DEVICE TO BASE OF LADDERS WHERE REQUIRED TO PREVENT USE BY UNAUTHORISED PERSONNEL. REFER TO PROJECT DRAWINGS FOR DETAILS.
7. ALL BURRS AND SHARP EDGES TO BE REMOVED.
8. AS 1657 RECOMMENDS LADDER SLOPES BETWEEN 70 AND 75 DEGREES.
9. IF USING RETRACTABLE / EXTENSION STANCHION DETAILS, REFER TO BW-SD-S022.
10. CONTRACTOR TO SUBMIT SHOP DRAWINGS FOR REVIEW PRIOR TO FABRICATION.
11. RUNG LADDER CLEARANCES TO COMPLY WITH AS 1657.
12. UP TO MAXIMUM 7° CROSS SLOPE ACROSS BASE OF RUNG LADDER ACCEPTABLE.



ALTERNATIVE STILE 2 - BASE PLATE DETAIL SCALE 1:10

FRONT ELEVATION

SIDE ELEVATION

RUNG LADDER DETAIL (STEP THROUGH)

SCALE 1:10
NOTE: STILE 2 LADDER TYPE NOT SHOWN

STANDARD DRAWING

MEMBER SIZES			
MEMBER	MILD STEEL (HDG)	STAINLESS STEEL (G316)	COMMENTS
STILE 1	75 x 12 FLAT BAR	75 x 12 FLAT BAR	MAX HEIGHT 3500mm
STILE 2	60.3 x 5.4 CHS	60.3 x 5.54 PIPE	MAX HEIGHT 6000mm
STILE BRACKET	75 x 12 FLAT BAR	75 x 12 FLAT BAR	
ANCHOR	M12 801 SERIES CHEMSETS (HDG)	M12 801 SERIES CHEMSETS (G316 SS)	
RUNG	DN20 SOLID ROD WITH SLIP RESISTANT COVER	DN20 SOLID ROD WITH SLIP RESISTANT COVER	
BASE PLATE	75 x 10 FLAT BAR	75 x 10 FLAT BAR	

REFERENCES		REVISIONS							
DRAWING	TITLE	No.	REVISION DESCRIPTION	OPS	OPS DATE	DRAWN	CHECKED	APPROVED	DATE
		0	ISSUED FOR USE (FROM BWA-SD-S023)	-	-	-	-	PT*	11.09.14



BARWON WATER - STANDARD DRAWING
RUNG LADDER ATTACHED TO PLATFORM
STEP THROUGH LADDER

DRG No. BW-SD-S023	DRAWING DISCIPLINE: STRUCTURAL SHEET NO. 1 of 1	DRAWN A. PRIMUS AUGUST '12	DESIGNED S. FOX AUGUST '12	APPROVED P. THOMAS* 11.09.14	SCALES: PLAN 1:10 SECTION 1:10 HORIZ. 1:10 VERT. 1:10 Scale for A1 sheet
--------------------	--	----------------------------------	----------------------------------	------------------------------------	---