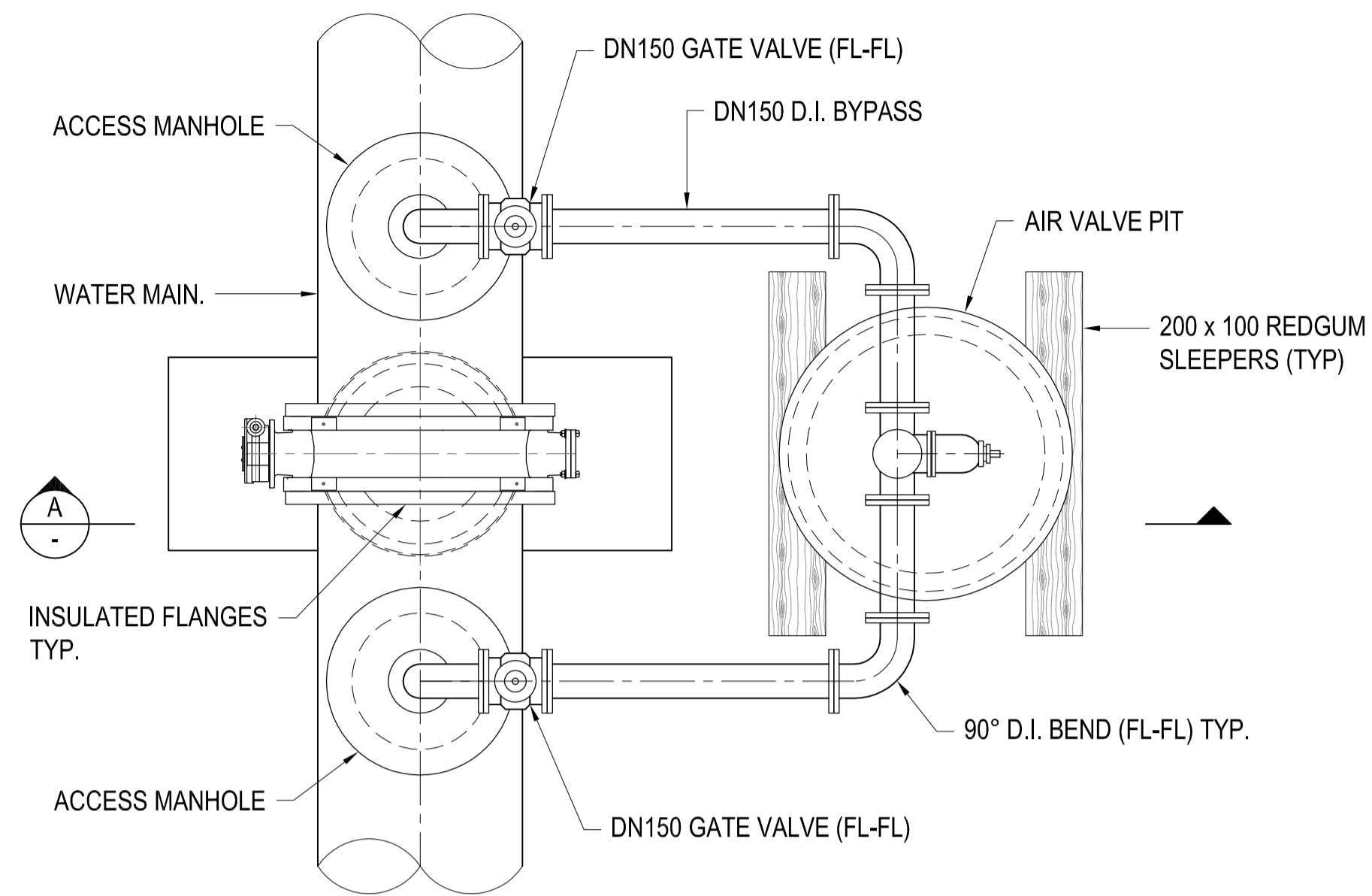


DO NOT SCALE



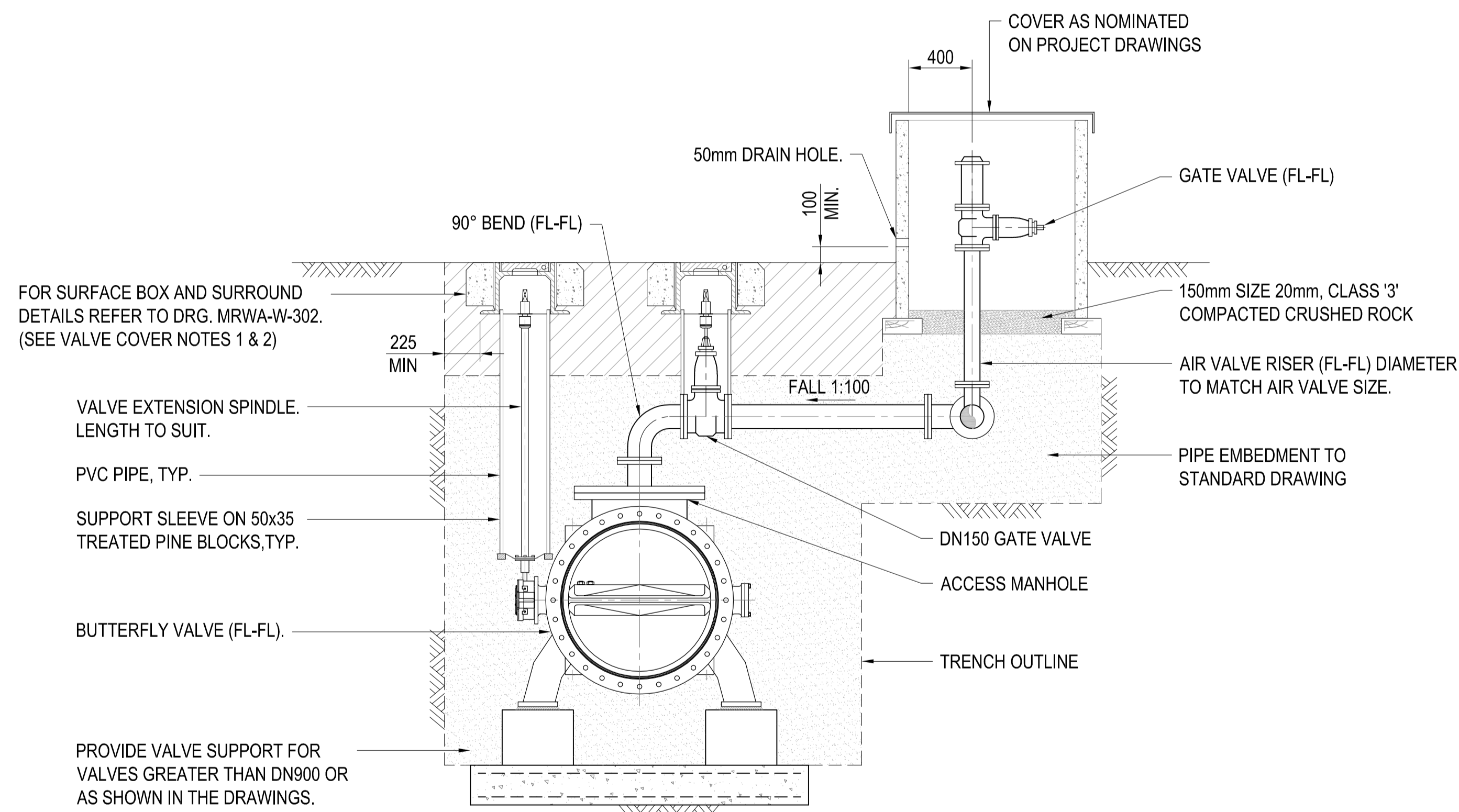
**PLAN VIEW  
LINE VALVE DETAIL**  
SCALE 1:25

**VALVE SUPPORT NOTES:**

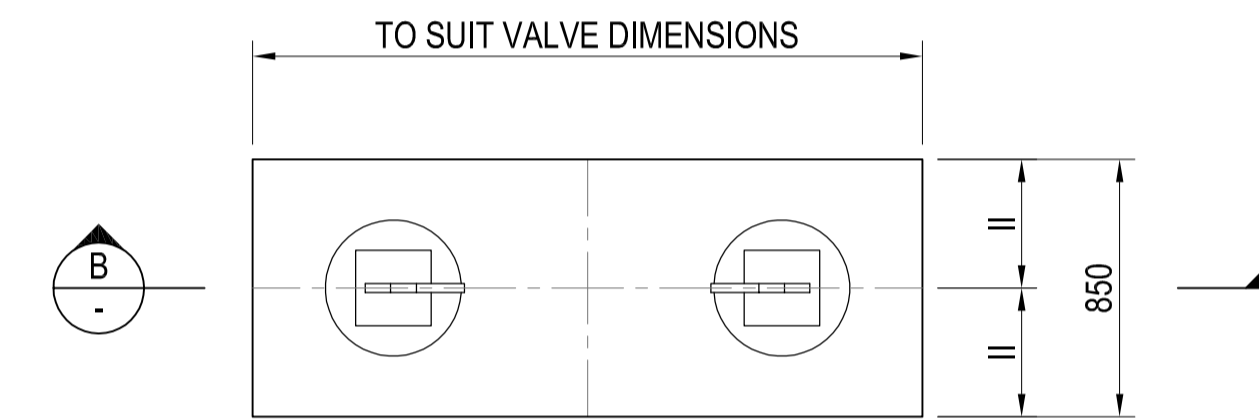
1. SET OUT THE POSITION OF VALVE, AND CONSTRUCT CONCRETE SLAB. ALLOW TO SET FOR A MINIMUM OF TWO (2) DAYS.
2. SECURE THE VALVE IN FINAL POSITION REQUIRED, SUPPORTING WEIGHT BY BLOCKING OR OTHER MEANS. LEAVING AREA IMMEDIATELY UNDER SUPPORT FEET. SET PIPE PIECES IN PLACE AND FILL WITH CONCRETE. GROUT BETWEEN UNDERSIDE OF FOOT AND TOP OF CONCRETE IN PIPE PIECES.
3. ALLOW CONCRETE AND GROUT TO SET FOR TWO (2) DAYS MINIMUM BEFORE TRANSFERRING WEIGHT OF VALVE FROM BLOCKING TO FEET.
4. INSULATE FLANGES IN ACCORDANCE WITH STANDARD DRG WAT 1313.
5. WHERE VALVE FEET ARE NOT SUPPLIED, PROVIDE SUPPORT FEET AS SHOWN IN THE DETAIL.
6. REFER DRG. BW-SD-C020 FOR COVER DETAILS.

**VALVE COVER NOTES:**

1. CONCRETE VALVE SURROUNDS ARE NOT USED IN ROAD PAVEMENT.
2. WHERE BUTTERFLY VALVES HAVE POSITION INDICATOR AND TORQUE LIMITER THEN THE VALVE COVER SHALL BE A CLASS 'D' DUCTILE IRON SEWER MAINTENANCE SHAFT COVER COMPATIBLE WITH AS3996 STRENGTH CLASSIFICATION.



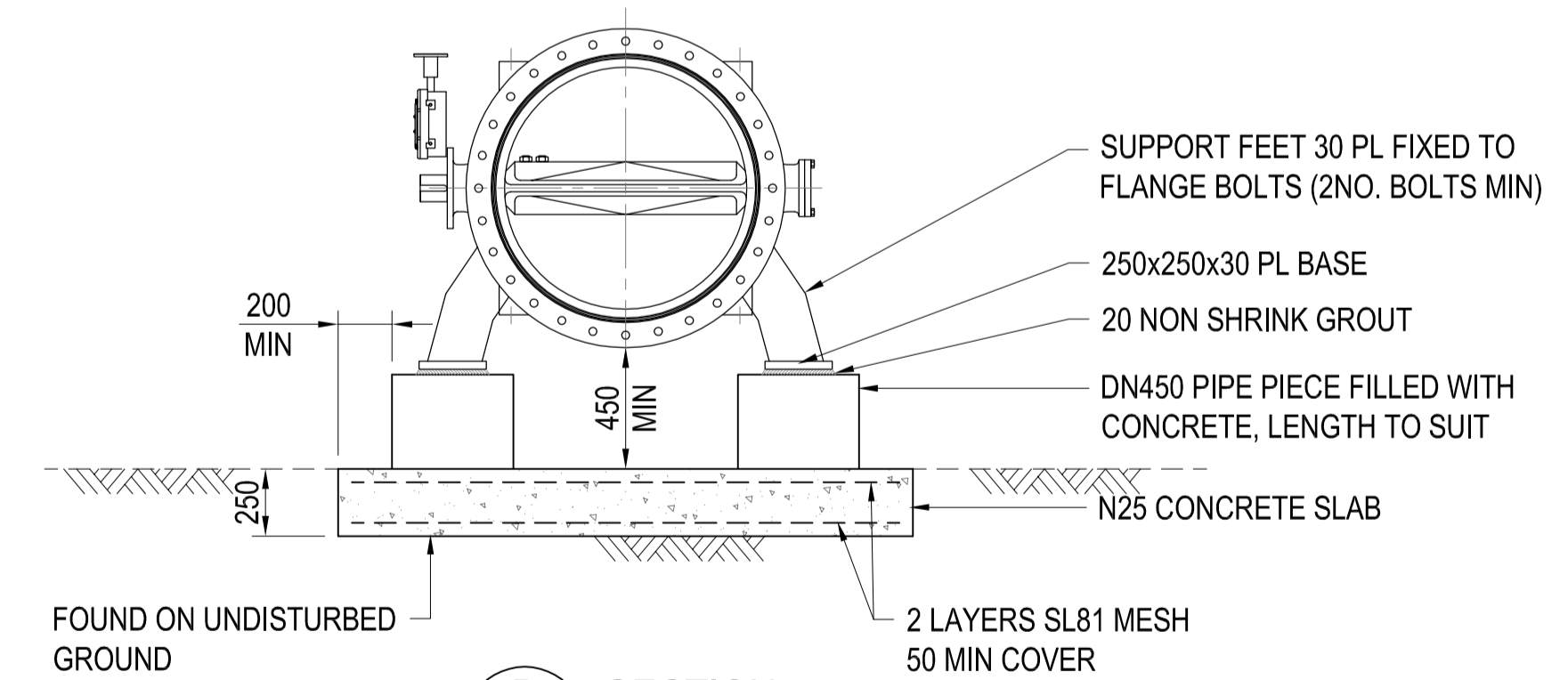
**A SECTION**  
SCALE 1 : 25



**PLAN VIEW  
VALVE SUPPORT DETAIL**  
SCALE 1:25

**NOTE:**

VALVE SUPPORTS ONLY NECESSARY FOR VALVES >DN900 WHERE SPECIFIED

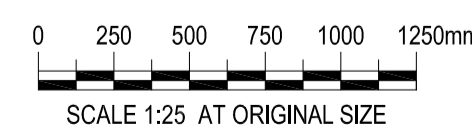


**B SECTION**  
SCALE 1 : 25

SOME DETAIL REMOVED FOR CLARITY

**STANDARD DRAWING**

REFERENCES		REVISIONS							
DRAWING	TITLE	No.	REVISION DESCRIPTION	OPS	OPS DATE	DRAWN	CHECKED	APPROVED	DATE
		0	ISSUED FOR USE (FROM BWA-SD-W023)	-	-	-	-	PT*	11.09.14



**BARWON WATER - STANDARD DRAWING**  
**WATER SUPPLY**  
**LINE BUTTERFLY VALVE INSTALLATION WITH AIR VALVE**

DRG No. **BW-SD-W023** DRAWING DISCIPLINE: WATER SHEET NO. 1 of 1

DRAWN	DESIGNED	APPROVED	SCALE:
R.MARRIOTT 17.11.09	A.MICALLEF 17.11.09	P.THOMAS* 11.09.14	PLAN SECTION 1:25 HORIZ. 1:25 VERT. 1:25 Scale for A1 sheet

Note: \* indicates signatures on original issue or last revision of drawing