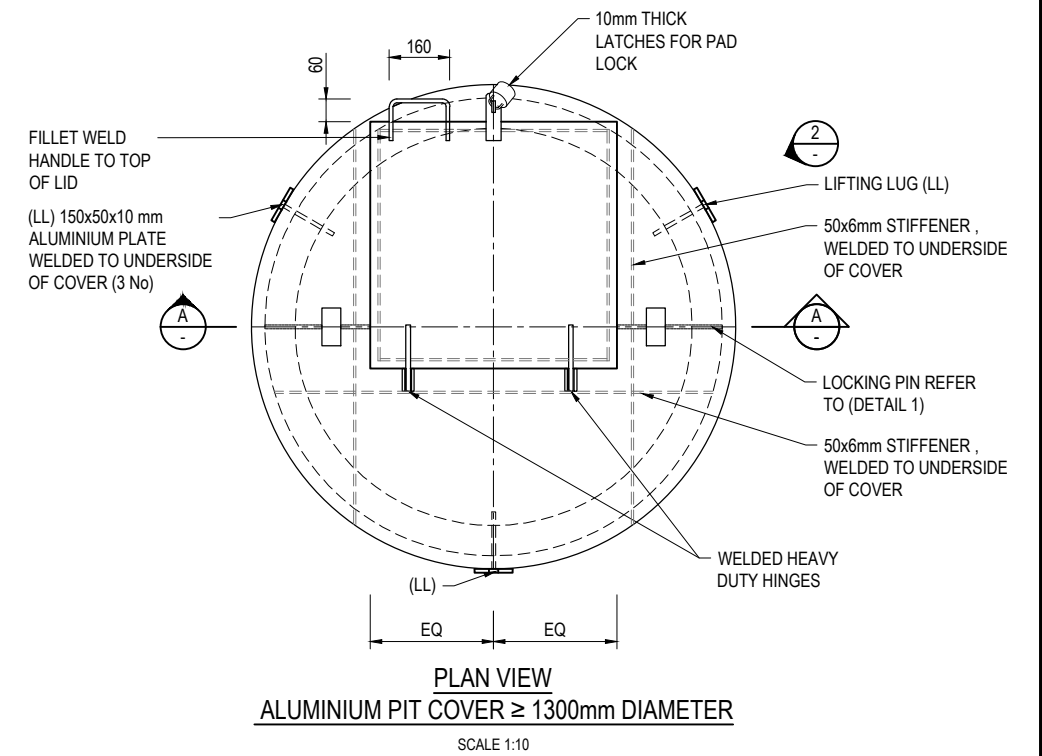
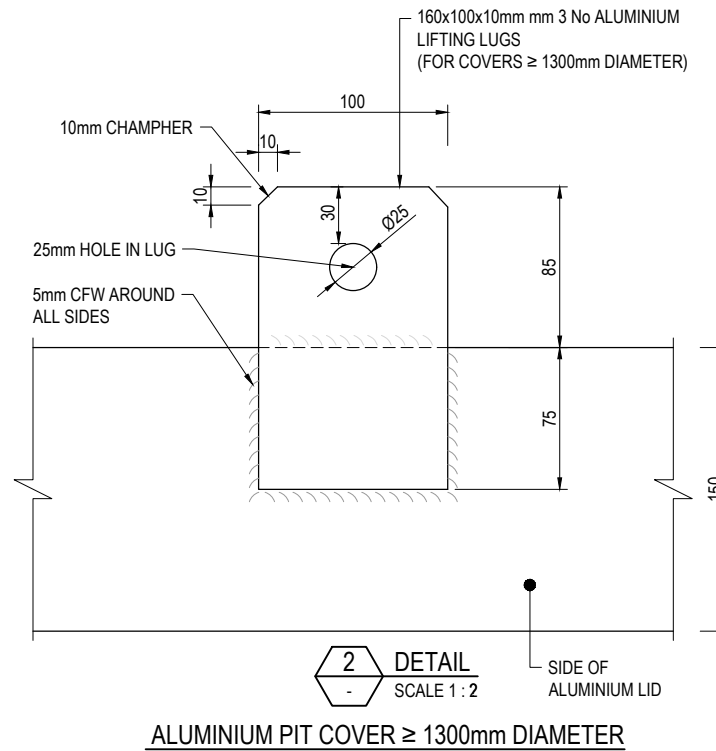
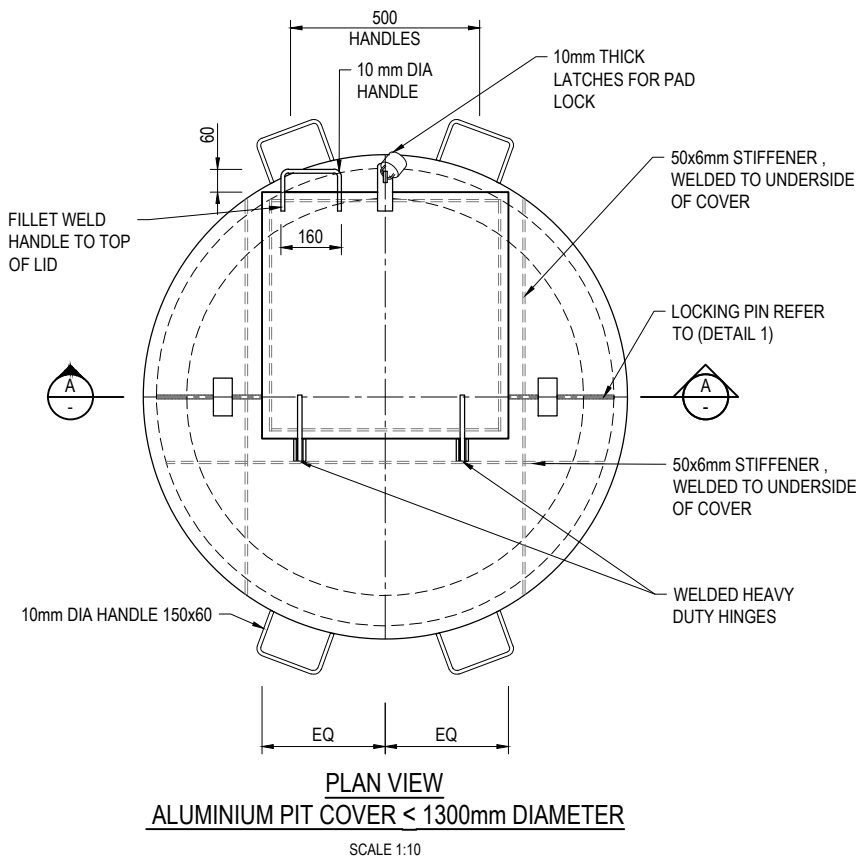
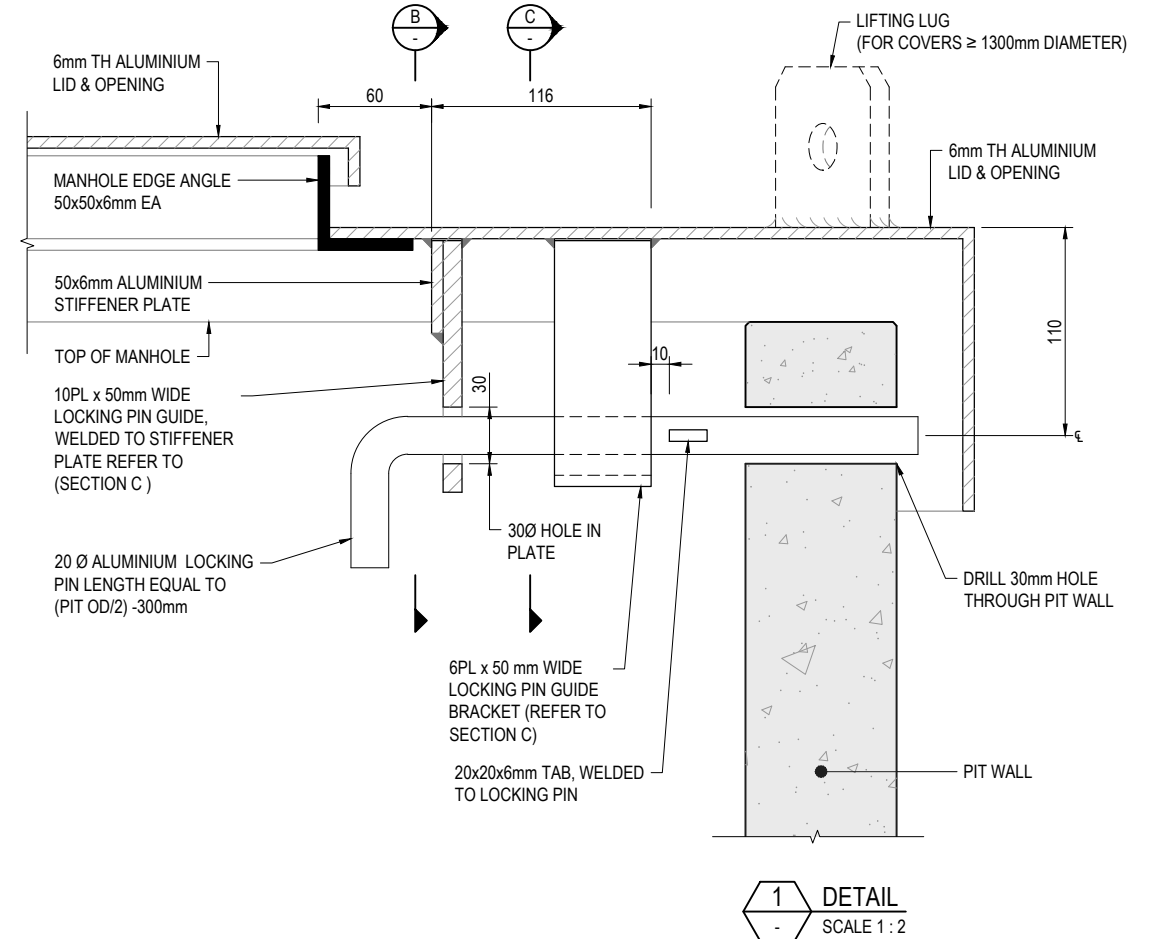
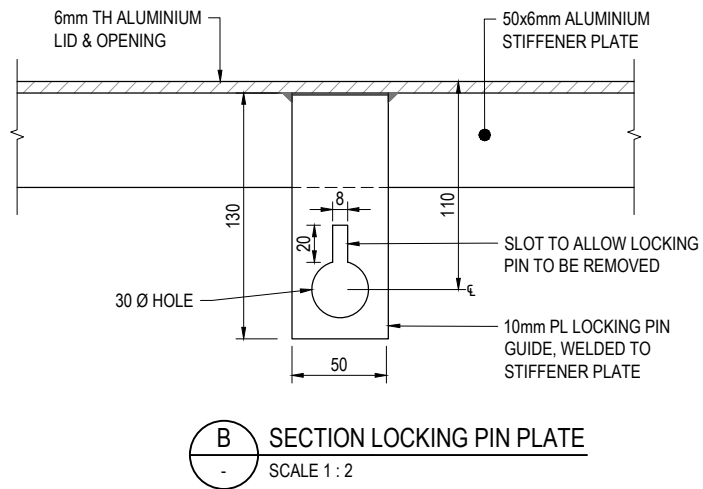
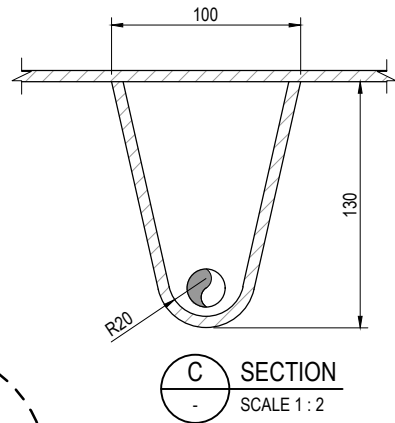
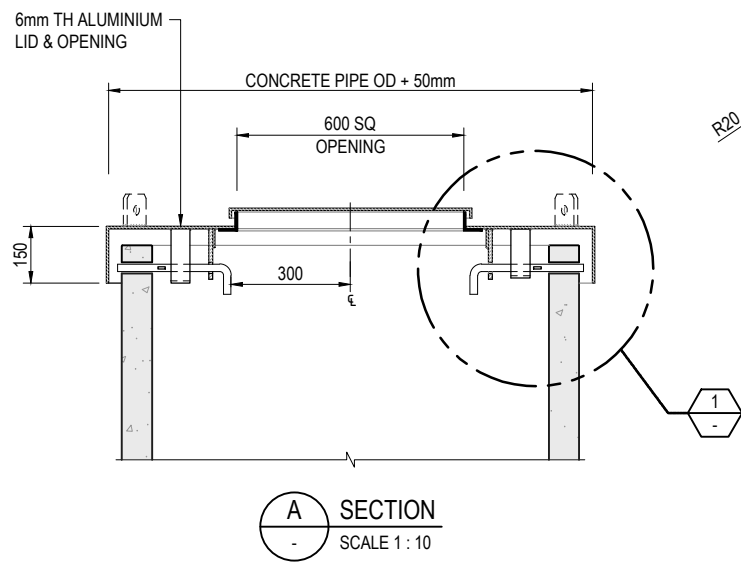


GENERAL NOTES

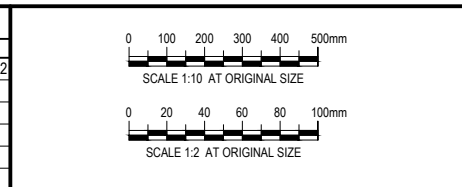
1. THESE DRAWINGS SHALL BE READ IN CONJUNCTION WITH THE TECHNICAL SPECIFICATION.
2. ALL DIMENSIONS ARE IN MILLIMETRES (UNLESS NOTED OTHERWISE).
3. ALL COVER MATERIAL TO BE ALUMINIUM GRADE 5083-H321 OR H116.
4. LIDS DESIGNED FOR A MAXIMUM PIT SIZE OF 1715mm OD
5. CAPACITY OF LIFTING LUGS CHECKED FOR COVER WEIGHT OF 250kg



STANDARD DRAWING

REFERENCES	
DRAWING	TITLE

REVISIONS					
No.	REVISION DESCRIPTION	DRAWN	CHECKED	APPROVED	DATE
0	ISSUE FOR USE	BM	MB*	BL*	16/11/22



Barwon Water
 55-67 RYRIE STREET, GEELONG, VICTORIA 3220
 Tel. 1300 656 007 Fax. (03) 5226 2556 www.barwonwater.vic.gov.au

BARWON WATER - STANDARD DRAWING ALUMINIUM - PIT COVERS FOR CIRCULAR PITS			
DRAWN	DESIGNED	APPROVED	
B MACAULEY 08.08.17	I MCCORMICK 25.08.17	P THOMAS* 11.09.17	
DRAFTING CHECK B MACAULEY* 24.08.17	DESIGN CHECK P THOMAS* 24.08.17		

DRG No. **BW-SD-W035** DRAWING DISCIPLINE: WATER SHEET NO. 1 of 1

SCALES: PLAN SECTION 1:10, HORIZ. 1:10, VERT. 1:10, Scale for A1 sheet