

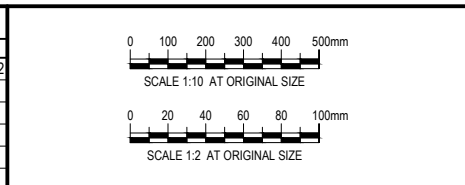
**GENERAL NOTES**

1. THESE DRAWINGS SHALL BE READ IN CONJUNCTION WITH THE TECHNICAL SPECIFICATION.
2. ALL DIMENSIONS ARE IN MILLIMETRES (UNLESS NOTED OTHERWISE)
3. ALL MATERIALS TO BE HOT DIPPED GALVANISED
4. ALL STEEL TO BE GRADE 250 MINIMUM.
5. LID DESIGNED FOR MAXIMUM PIT SIZE OF 1715mm OD
6. CAPACITY OF LIFTING LUGS CHECKED FOR COVER WEIGHT OF 250kg

**STANDARD DRAWING**

REFERENCES	
DRAWING	TITLE

REVISIONS					
No.	REVISION DESCRIPTION	DRAWN	CHECKED	APPROVED	DATE
0	ISSUE FOR USE	BM	MB*	BL*	16/11/22



**Barwon Water**  
55-67 RYRIE STREET, GEELONG, VICTORIA 3220  
Tel. 1300 656 007 Fax. (03) 5226 2556 www.barwonwater.vic.gov.au

DRG No. **BW-SD-W034** DRAWING DISCIPLINE: WATER SHEET NO. 1 of 1

BARWON WATER - STANDARD DRAWING MILD STEEL - PIT COVERS FOR CIRCULAR PITS				FILE No.
DRAWN B MACAULEY 17.05.10	DESIGNED I MCCORMICK 17.05.10	APPROVED P THOMAS* 11.09.14	SCALES: PLAN SECTION HORIZ. VERT. Scale for A1 sheet	1:10 1:10 1:10
DRAFTING CHECK B MACAULEY 24.06.10	DESIGN CHECK P THOMAS 24.06.10			